



## I P FRAUD INVESTIGATIONS

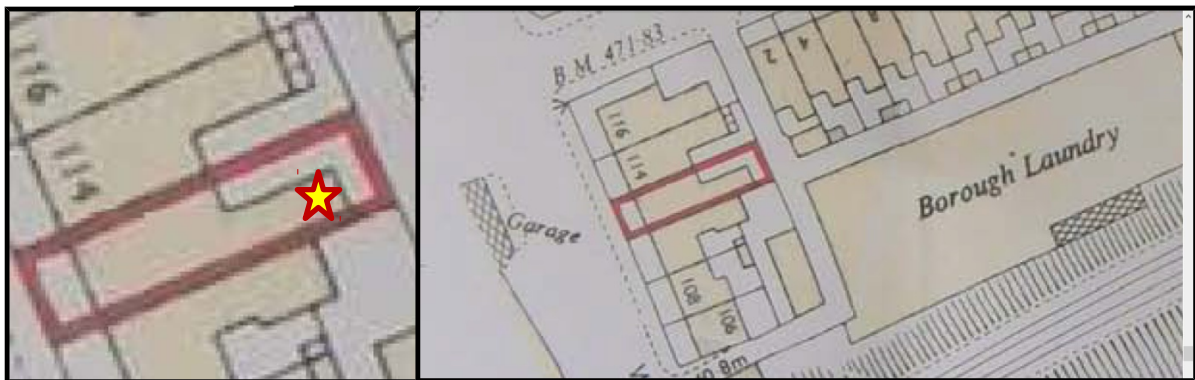
Bramble Croft  
Grindleton, CLITHEROE  
Lancashire, BB7 4QT

### INCORRECT JULY 2018 O.S. MAP UPDATE

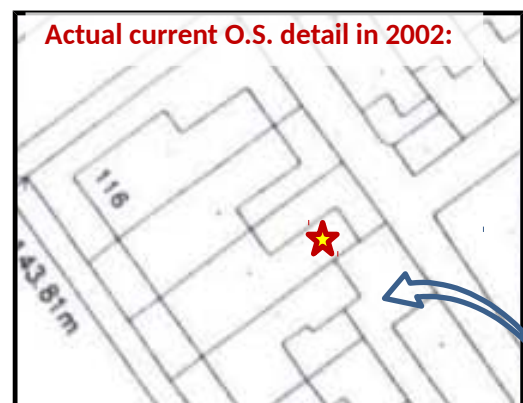
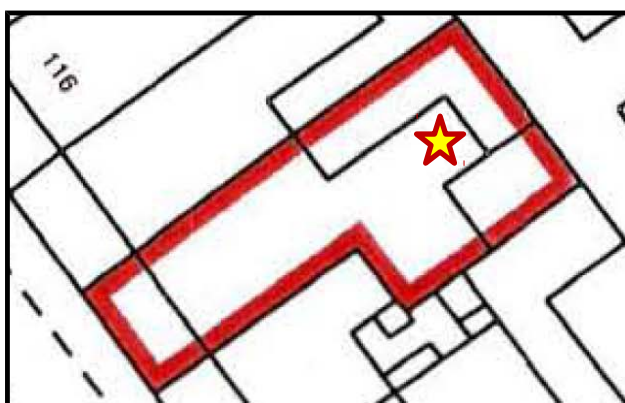
&

### RELATED “O.S. DETAIL” ISSUES – INDEX FOR PARTS 1-6

In [Part 1](#), the 1985 First Registration Leasehold Title Plan (below) for 112 Whalley Rd is shown to be rescinded in 2002 because the extent of 112 is larger than this:



In [Part 2](#), the 2002 replacement Leasehold Title Plan (below) for 112 Whalley Rd is shown not to be “based on the latest revision of the Ordnance Survey Map”:



In [Part 3](#), the question was raised as to if/how Solicitors seeking First Registration of Leasehold Property 110 Whalley Road presented “the extent of the property”.

In [Part 4](#), it is shown that there must have been a Ground Visit in 2001 to this yard.

In [Part 5](#), it is shown that O.S detail has been altered by HMLR after its own Visits.

In [Part 6](#), Parts 1-5 are summarised and three requests are made of O.S.