

Land Registry
 Official Copy
 This copy may not be the same size as the original.

Copy of plan received from
 Steele Son - 16.2.80.



50080



LA581740

H137

H M LAND REGISTRY

Title No: LA581740

COPY (liable to distortion in scale)

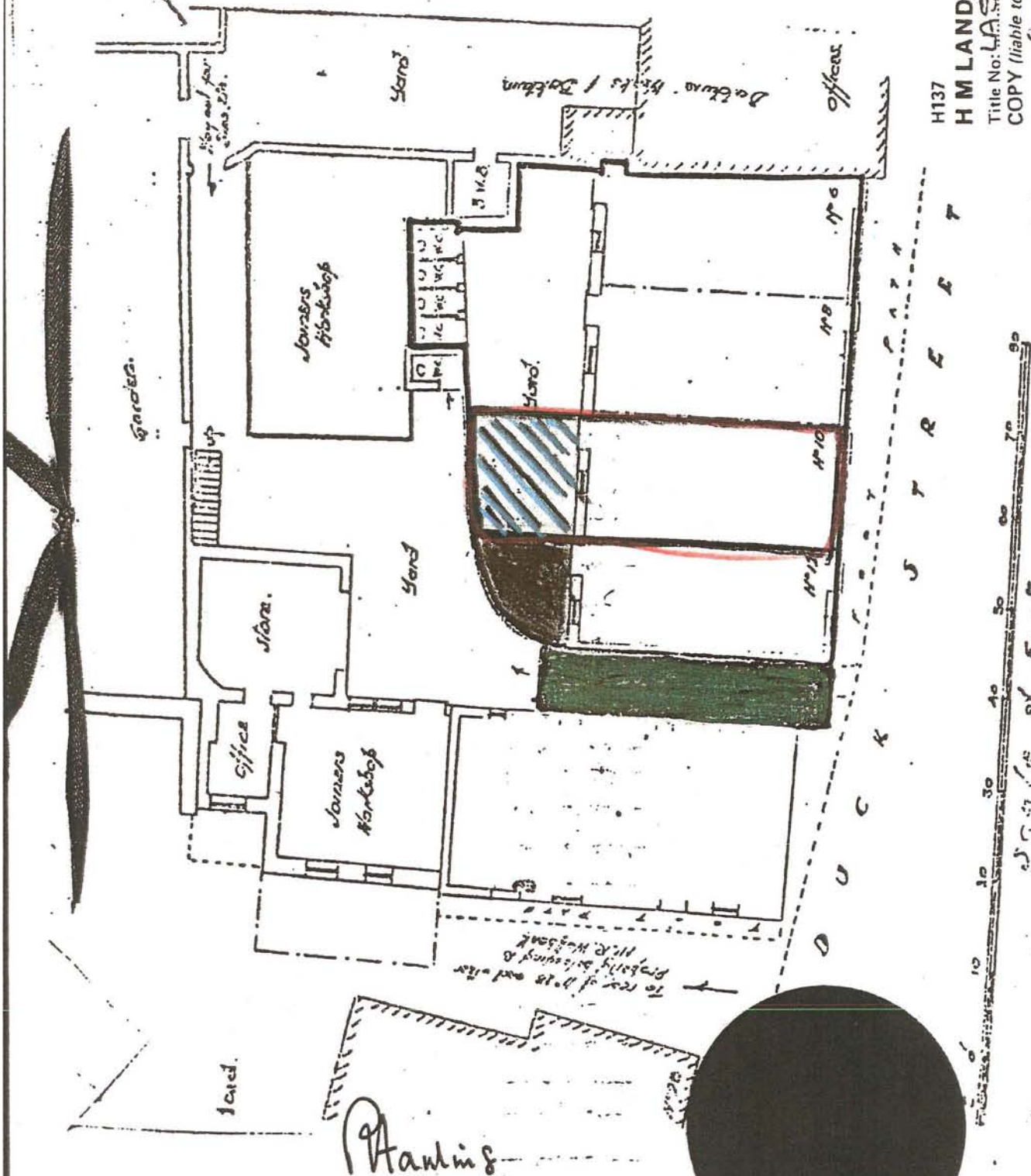
of plan to COM.

dated 21.7.1980

6/80



PLAN



P. Hanley

THE ASSISTANT SOLICITOR FOR THE AFFAIRS
 OF THE DUCHY OF LANCASTER