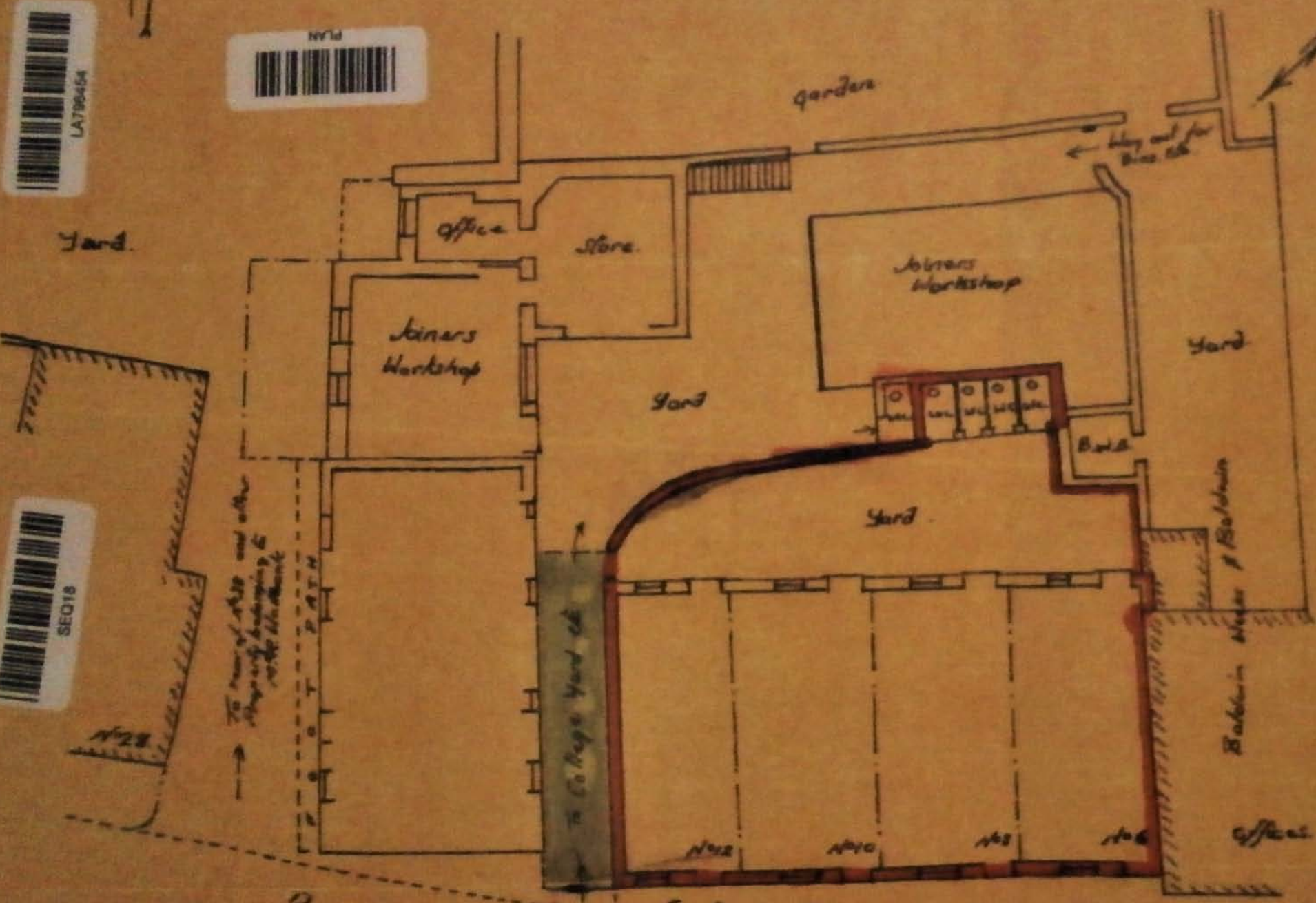


# Plan related to

DISTRICT LAND REGISTRY  
Title No: LA 196454  
COPY (liable to distortion)  
of plan to Conservation  
dated 2nd August 1951  
(Revised 1961)



To rear of N28 and other things only belonging to N28 etc etc etc

Way out for Blue etc

To College Yard etc

Babbalan's Meads & Babbalan

N42 N40 N38 N36

FOOT PATH

LAND REGISTRY  
LANCASHIRE OFFICE  
WREA BROOK COURT  
LYTHAM ROAD  
WARTON  
LANCS  
PR4 1TE  
DX: 721560 LYTHAM 6  
Tel: (01772) 836700

8 May 2007

Your Ref: DLH/73417  
Our Ref: LA581740 /OC/024

RECEIVED 09 MAY 2007

### Official copy/copies

I enclose the official copy/copies of the document(s) you applied for.

Please contact the Land Registry office named above if you have any questions about the enclosed official copy/copies.

DLH/73417

BLACKHURST SWAINSON GOODIER  
DX 714571  
PRESTON 14

LR Payment Ref: 08/05 62LA8WQH  
Fee Debited: £10.00





Land Registry  
 Official Copy  
 This copy may not be the same size as the original.

Copy of plan received from  
 Steele Son - 16.2.80.



50080



LA581740

H137

H M LAND REGISTRY

Title No: LA581740

COPY (liable to distortion in scale)

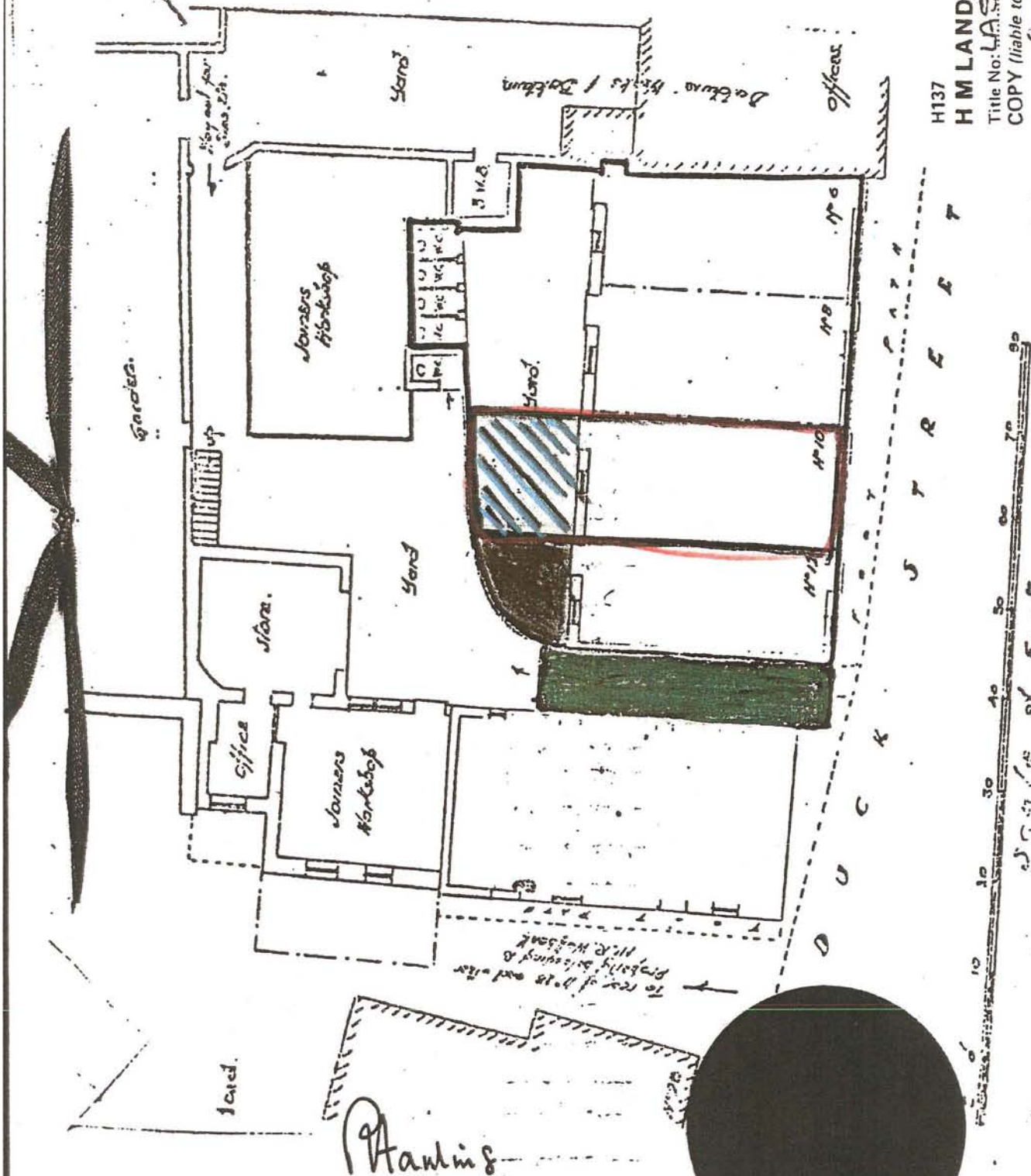
of plan to COM.

dated 21.7.1980

6/80



PLAN



*Phanias*

THE ASSISTANT SOLICITOR FOR THE AFFAIRS  
 OF THE DUCHY OF LANCASTER